

SITOK IAS

DEEP DIVE

Super El Niño

GLOBAL CLIMATE DISRUPTION • 2026

PACIFIC SYSTEM BREAKDOWN



SITOK IAS

Less Noise. more Retention.



Table of Contents

UNDERSTANDING THE TRIO—EL NIÑO, LA NIÑA, AND THE "SUPER" FACTOR.....	2
COMPARISON TABLE: NORMAL EL NIÑO VS. SUPER EL NIÑO	4
SCIENTIFIC & OCEANOGRAPHIC CHARACTERISTICS.....	4
IMPACT ASSESSMENT	8
GEOGRAPHICAL DISTRIBUTION OF IMPACTS: INDIA AND THE GLOBAL PACIFIC.....	9
MITIGATION STRATEGIES AND POLICY FRAMEWORKS	10
CONCLUSION.....	11

The Super El Niño of 2026 is essentially a massive "fever" in the Pacific Ocean that changes the weather for the entire planet. Usually, the Pacific Ocean has a pattern where strong winds push warm water toward Asia and Australia, keeping it "piled up" there. In a Super El Niño year, these winds collapse. That giant pile of warm water starts sliding back toward South America like water sloshing in a bathtub.

Because the ocean is so big, this heat doesn't stay in the water; it rises into the air, changing where clouds form and where rain falls.

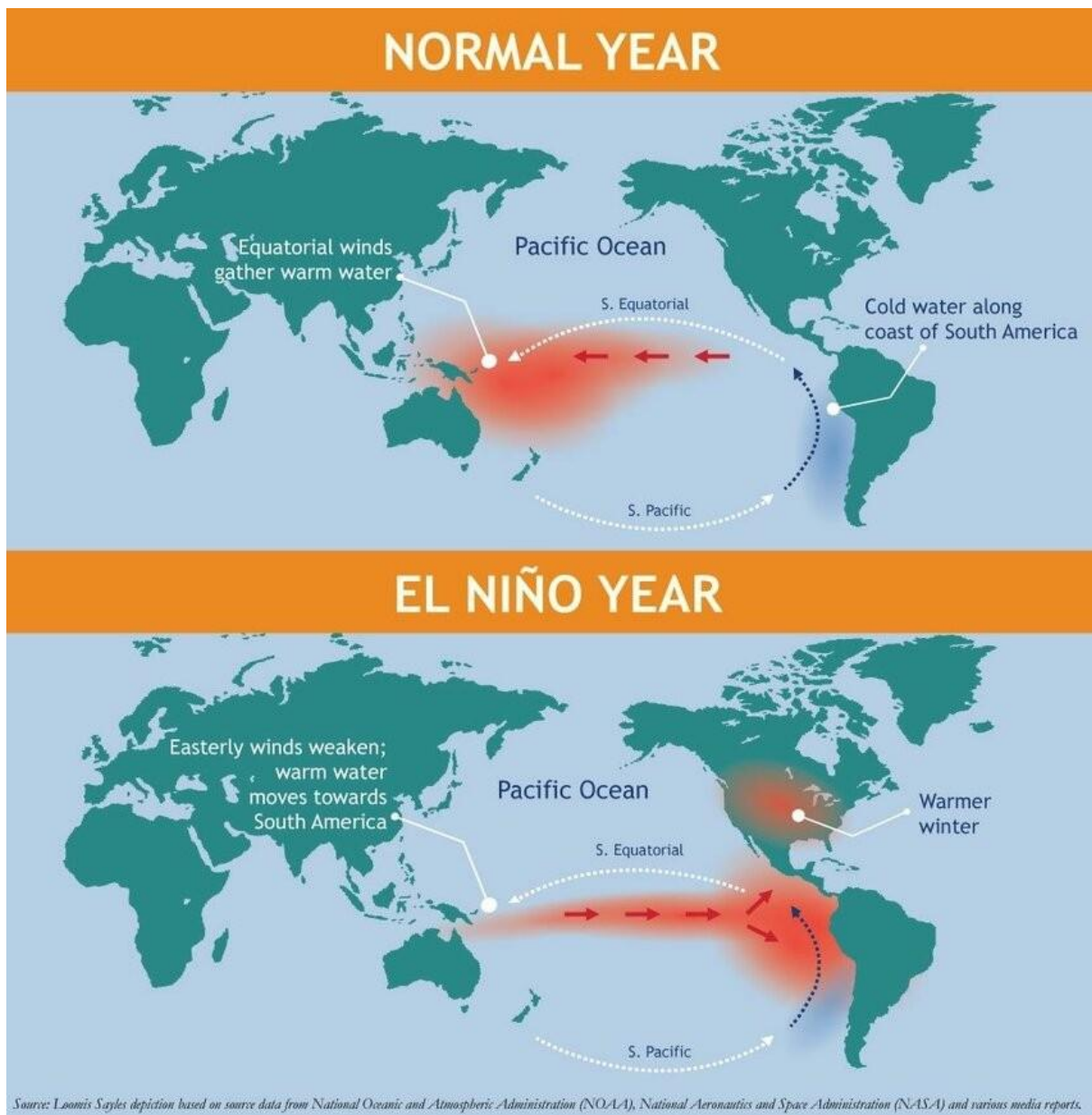
While a normal El Niño causes some shifts, a "Super" event—like the one we are seeing in 2026—means the ocean temperatures are so high (over above normal) that it disrupts global food supplies, creates massive storms in some places, and causes extreme droughts in others. It is a natural event, but in 2026, it is being made worse by the overall warming of the planet.

Understanding the Trio—El Niño, La Niña, and the "Super" Factor

This section explains the natural rhythm of the Pacific Ocean. Think of the Pacific as a giant seesaw. Sometimes it tilts one way (El Niño), sometimes the other (La Niña), and sometimes it stays balanced (Neutral). A "Super" event is when the seesaw doesn't just tilt—it slams into the ground with extreme force.

- **What is El Niño? (The "Warm" Phase):** In Spanish, it means "The Boy Child." It happens when the warm water that is usually near Australia travels across the ocean to the coast of South America (Peru). For a student, remember: **El Niño = Warm water moves East = Drought in India/Australia + Floods in South America.**





- **What is La Niña? (The "Cool" Phase):** This is the opposite, meaning "The Girl Child." The winds become extra strong and push even *more* warm water toward Asia. This usually brings "good" news for India. For a student, remember: **La Niña = Cold water in the East = Good Monsoon in India + Drought in South America.**
- **The "Normal" State (Neutral):** This is the balanced seesaw. Winds blow moderately from East to West, rain falls predictably over Indonesia, and the fisheries in Peru stay cool and productive.
- **What makes it "SUPER"?:** A Super El Niño isn't a different *kind* of event; it's just a regular El Niño on "steroids." While a normal event warms the ocean by to , a Super event like the one in 2026 crosses the **mark**. This extra heat acts as a massive fuel injection for the world's weather.
- **The "Godzilla" Scale:** Scientists use the **Oceanic Niño Index (ONI)** to rank these. If the "fever" stays very high for many months, it gets the "Super" label. Only three have been recorded in recent history: 1982-83, 1997-98, and 2015-16. 2026 is now the fourth.
- **Atmospheric Coupling:** In a normal El Niño, the ocean warms up. In a Super El Niño, the *atmosphere* reacts violently. The winds don't just weaken; they reverse. This "coupling" is like a



feedback loop where the hot ocean makes the winds change, and the changing winds make the ocean even hotter.

- **The Global Temperature Spike:** A normal El Niño might raise global temperatures slightly. A Super El Niño can push the entire planet's average temperature up by a significant margin. In 2026, this is why we are seeing "Heat Dome" warnings across Europe and North America simultaneously.
- **Duration and Intensity:** Regular events might fade away in 6-9 months. "Super" events tend to be "long-lived." The 2026 event is expected to dominate the weather for over a year, leaving no time for ecosystems or economies to recover between seasons.

Comparison Table: Normal El Niño vs. Super El Niño

	Normal El Niño	Super El Niño (2026)
Temperature Rise	to above average	Over (Extreme "Fever")
Winds	Trade winds become weak	Trade winds completely reverse (West to East)
Monsoon Impact	Some rain deficit in India	Severe drought / Risk of total Monsoon failure
Global Heat	Year is "warm"	Year is likely the "Hottest on Record"
Economic Damage	Localized to farming/fishing	Global supply chain and energy crisis
Marine Life	Fish move to deeper waters	Massive coral bleaching and "die-offs"

Scientific & Oceanographic Characteristics

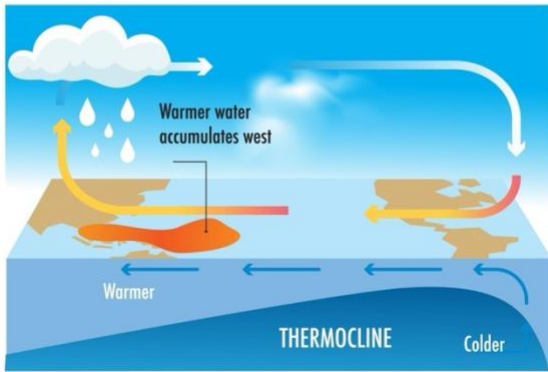
This section explains how the "engine" of the Pacific Ocean breaks down. Think of the Pacific Ocean as a global air conditioner; during a Super El Niño, that air conditioner breaks and starts blowing hot air into the room instead of cold air. We look at the specific measurements and natural "glitches" that tell scientists a massive event is coming.



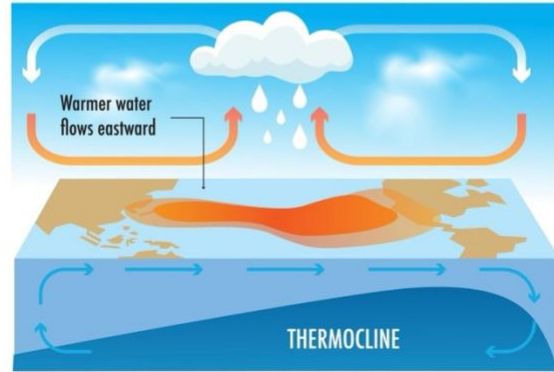


CLIMATE CHANGE

Normal condition

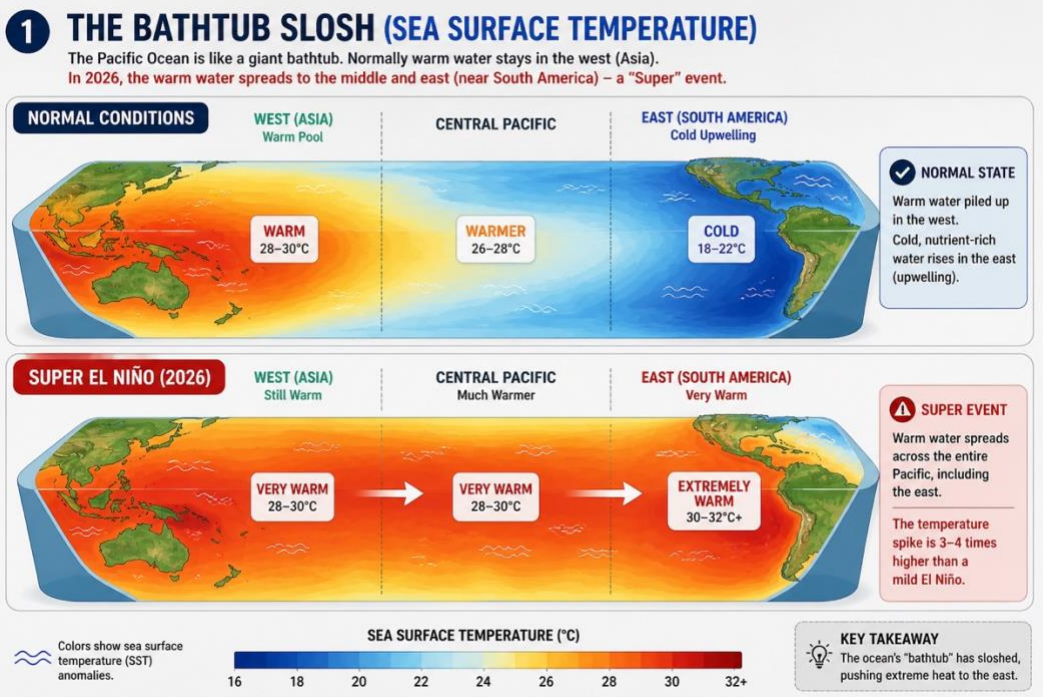


El Nino condition



Explore and Learn:

- **The "Bathtub Slosh" (Sea Surface Temperature):** Imagine the Pacific Ocean as a giant bathtub. Normally, the water is much warmer on the left side (Asia). In 2026, we are seeing the water in the middle and on the right (near South America) heat up by more than . When it gets this hot, it's called a "Super" event because the temperature spike is three to four times higher than a mild version.

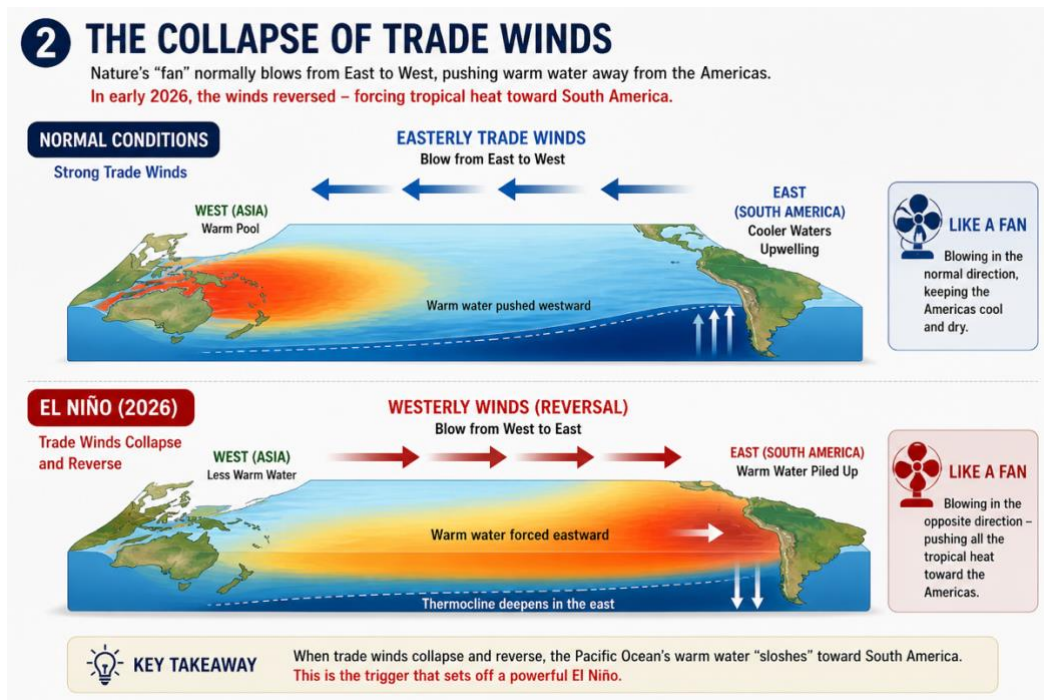


- **The Collapse of Trade Winds:** Nature has "Trade Winds" that usually blow from East to West, pushing the heat away from the Americas. In early 2026, these winds didn't just slow down; they

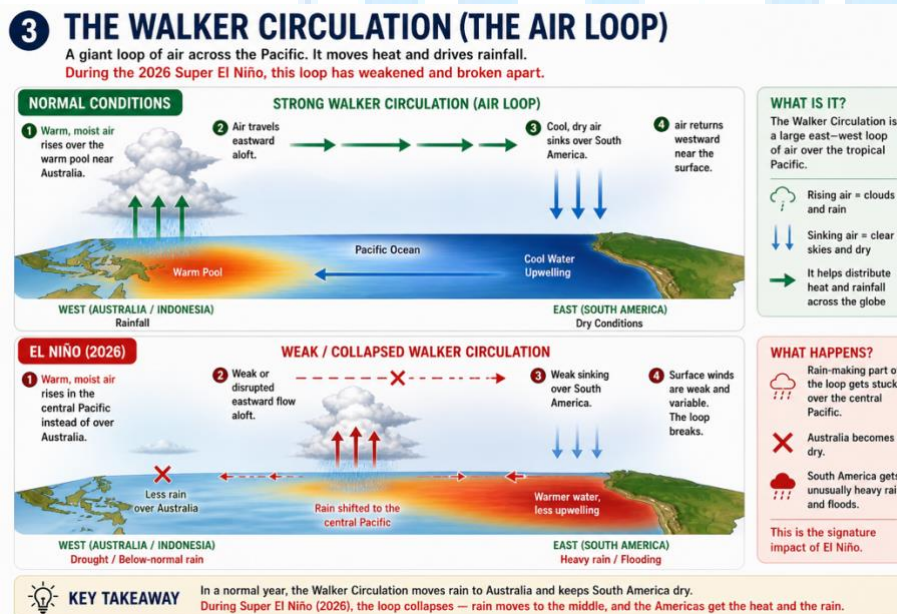


| Click to Connect Now.

actually reversed. This is like a fan suddenly blowing in the opposite direction, forcing all that tropical heat toward countries like Peru and Ecuador.



- **The Walker Circulation (The Air Loop):** Think of this as a giant loop of air. Air rises in the west (near Australia), travels across the ocean, and sinks in the east (near South America). During this Super El Niño, this loop has completely broken apart. This means the "rain-making" part of the loop is now stuck over the middle of the ocean instead of over the land where people need the water.



- **The Kelvin Wave (Subsurface Heat):** Heat isn't just on the surface. Deep under the waves, a massive "blob" of warm water called a Kelvin Wave has been moving across the Pacific. Think of it like a slow-moving underground heater. By the time it hits the coast of South America, it pushes all the cold, nutrient-rich water down deep, leaving only hot water at the surface.

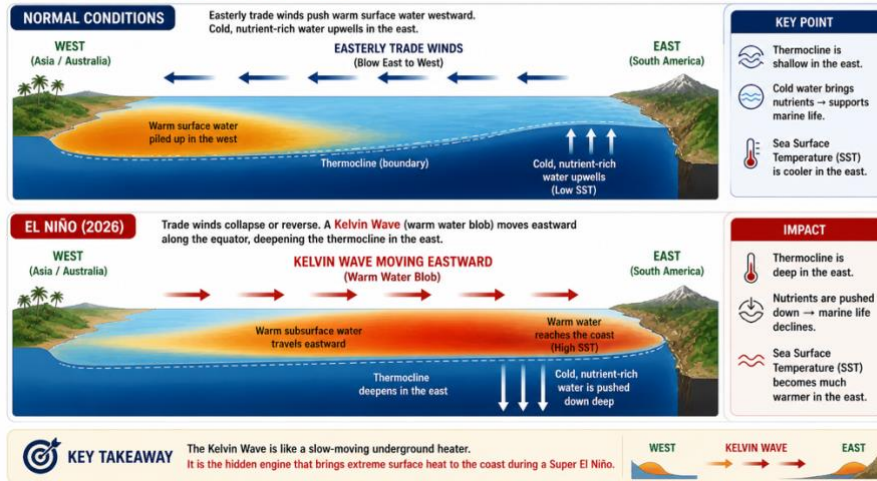


| Click to Connect Now.

4 THE KELVIN WAVE (SUBSURFACE HEAT)

Heat isn't just on the surface. Deep under the waves, a massive "blob" of warm water called a Kelvin Wave has been moving across the Pacific. By the time it hits the coast of South America, it pushes all the cold, nutrient-rich water down deep, leaving only hot water at the surface.

WHAT IS A KELVIN WAVE?
A long wave that travels along the equator from west to east, carrying a "pile" of warm water deep in the ocean.

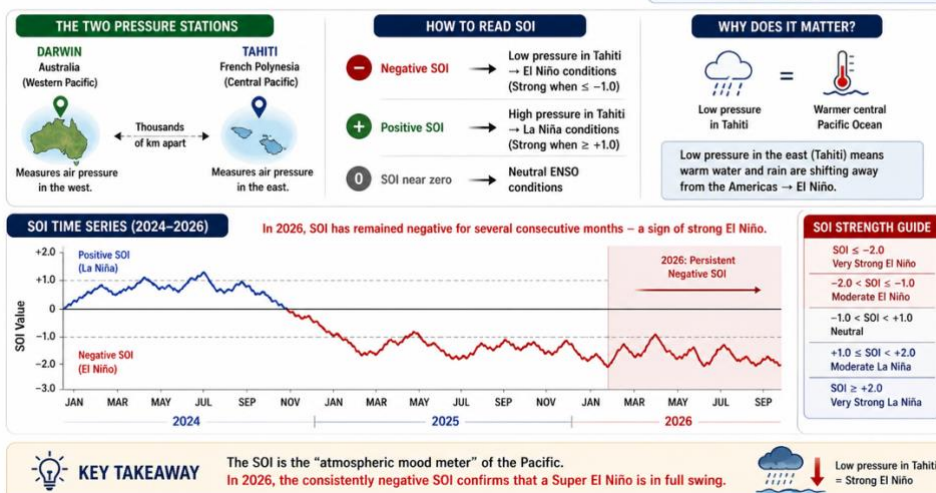


- **The Climate Threshold:** Scientists are worried because the heat from this 2026 El Niño is being added to the heat already caused by global warming. According to the **Paris Agreement** (an international treaty on climate change), we are trying to keep global warming below 1.5°C. This Super El Niño might temporarily push the entire planet past that "danger line" for the first time.
- **The Role of the WMO:** The **World Meteorological Organization (WMO)** acts like a global "Weather Police." They monitor these changes using a network of floating buoys in the ocean. In 2026, they issued a "Red Alert" because their data showed that the ocean heat was higher than the previous record-breaking years of 1997 and 2015.
- **The Southern Oscillation Index (SOI):** This is a way to measure the "mood" of the atmosphere. Scientists compare the air pressure in Darwin (Australia) and Tahiti. If the pressure is much lower in Tahiti, it means a Super El Niño is active. In 2026, these numbers have stayed "negative" (meaning the El Niño is very strong) for several months in a row.

7 SOUTHERN OSCILLATION INDEX (SOI)

This is a way to measure the "mood" of the atmosphere. Scientists compare the air pressure in Darwin (Australia) and Tahiti. If the pressure is much lower in Tahiti, it means a Super El Niño is active. In 2026, these numbers have stayed negative for several months in a row.

WHAT IS SOI?
The Southern Oscillation Index (SOI) is the standardised difference in air pressure between Darwin (Australia) and Tahiti (French Polynesia).
 $SOI = (\text{Pressure in Darwin} - \text{Pressure in Tahiti}) / \text{Standard Deviation}$





- **The "Godzilla" Label:** While not a scientific term, many experts use the name "Godzilla El Niño" for years like 2026. This helps the public understand that this isn't a normal seasonal change, but a "monster" event that requires governments to use **Statutory Acts** (like Disaster Management laws) to prepare for the coming weather chaos.

Impact Assessment

The 2026 Super El Niño serves as a massive disruptor, creating a "cascading effect" where climate irregularities trigger failures across agriculture, public health, and global trade systems. As ocean temperatures in the Pacific cross the critical threshold, the resulting atmospheric shifts manifest as simultaneous extremes—unprecedented droughts in Asia and Australia alongside catastrophic flooding in the Americas. This section outlines the multidimensional risks, ranging from food insecurity and "heat-flation" to the degradation of critical ecosystems and the strain on national disaster frameworks.

- **Contraction in Agricultural Output:** The 2026 event poses a direct threat to the Kharif (summer) crop cycle in India. With the India Meteorological Department (IMD) forecasting rainfall at just 92% of the Long Period Average (LPA), major crops like rice, pulses, and oilseeds are facing high "mortality rates" due to soil moisture depletion.
- **The "Heat-flation" Phenomenon:** Scarcity of essential commodities leads to a spike in the **Consumer Price Index (CPI)**. In 2026, the **Reserve Bank of India (RBI)** has had to maintain higher interest rates to combat food inflation, which is estimated to rise by **8-12%** due to supply chain disruptions caused by the weather.
- **Public Health and Survivability Limits:** Extreme heatwaves in 2026 are pushing "Wet-Bulb" temperatures—a measure of heat plus humidity—toward the **35°C** limit of human endurance. This has resulted in a surge of heat-related illnesses, placing immense pressure on the healthcare goals outlined in the **National Action Plan on Heat-Related Illnesses**.
- **Energy Grid Instability:** Record-breaking temperatures (reaching **46-50°C** in parts of South Asia) have caused a massive spike in cooling demand. This "Peak Load" stress, combined with reduced hydropower generation due to low reservoir levels, has forced many nations to implement emergency power rationing.
- **Global Maritime Bottlenecks:** The 2026 drought has significantly lowered water levels in the **Panama Canal**, a critical artery for global trade. This reduction in ship transits creates a "bottleneck" effect, increasing shipping surcharges and delaying the delivery of fuel, grains, and manufactured goods worldwide.
- **Outbreaks of Vector-Borne Diseases:** The irregular rainfall patterns associated with Super El Niño create "breeding pockets" for mosquitoes. While some areas face drought, others face stagnant water from unseasonal floods, leading to a rise in cases of **Dengue, Malaria, and Zika**, as flagged by the **World Health Organization (WHO)**.
- **Ecological Crisis and Coral Bleaching:** The intense ocean heat of 2026 has triggered a "Global Bleaching Event." Massive sections of the **Great Barrier Reef** and the **Andaman Sea** corals are dying, which threatens marine biodiversity and the livelihoods of millions involved in the blue economy.





- **Wildfire Escalation and Carbon Feedback:** Extremely dry conditions in the **Amazon** and Southeast Asian rainforests have led to "Megafires." These fires do not just destroy biodiversity but release gigatonnes of stored carbon, further accelerating global warming in a dangerous "vicious cycle."
- **Urban Infrastructure Strain:** Cities are suffering from the "Urban Heat Island" effect, where concrete traps 2026's record heat. This has led to a sharp increase in water consumption, straining municipal resources and testing the limits of **State Heat Action Plans (HAPs)**.
- **Legal and Constitutional Implications:** In India, the surge in climate-driven hardships has brought **Article 21 (Right to Life)** into focus. Courts are increasingly viewing protection from extreme heat and access to water during El Niño as fundamental rights, pressuring the government to enhance social safety nets.
- **Economic Productivity Losses:** It is estimated that the 2026 Super El Niño could cause a loss of **5.8% of daily working hours** in sectors like construction and agriculture. This loss of labor productivity directly impacts the national **GDP**, as outdoor workers are forced to stop during peak heat hours.
- **The Disaster Management Act (2005) Implementation:** Under this statutory act, the Indian government has activated the **National Disaster Response Fund (NDRF)** to provide immediate financial relief to drought-hit farmers, ensuring that the rural economy does not collapse under the weight of crop failures.

Geographical Distribution of Impacts: India and the Global Pacific

The 2026 Super El Niño is not a uniform event; its effects depend on which side of the "Pacific Seesaw" a region is located. While the Eastern Pacific (near South America) faces drowning rains, the Western Pacific (near Australia and Asia) is parched by extreme heat and drought. For India, the phenomenon acts as a "Monsoon Breaker," disrupting the moisture-bearing winds that are the lifeblood of its economy.

- **The Eastern Pacific "Flood Zone":** In 2026, countries like Peru, Ecuador, and the southern United States are experiencing massive rainfall. Because the warm water has shifted toward their coasts, the air above it is full of moisture. This results in devastating floods and landslides, which destroy infrastructure and wash away coastal fisheries.
- **The Western Pacific "Fire Zone":** On the opposite side, Australia, Indonesia, and Southeast Asia are facing a severe lack of rain. In 2026, the risk of "Megafires" has skyrocketed. These regions are seeing their rainforests turn into "tinderboxes," leading to hazardous haze and the loss of unique wildlife habitats.
- **India's "Monsoon Deficit":** India sits at a critical junction. The Super El Niño weakens the "Trade Winds" that usually bring the Southwest Monsoon. In 2026, the **IMD (India Meteorological Department)** has predicted a significant rainfall deficit (around **92% of the average**), which directly threatens the water security of the Indian subcontinent.
- **The Indian Ocean Dipole (IOD) Shield:** India has a unique "buffer" called the IOD. In 2026, scientists are closely watching if a "Positive IOD" (warmer water in the Western Indian Ocean) will develop. If it does, it can partially "neutralize" the bad effects of the Super El Niño, bringing much-needed rain to the Indian mainland despite the Pacific crisis.





- **Impact on South American Fisheries:** Along the coast of Peru, the usual "Upwelling" (where cold, nutrient-rich water rises from the deep) has stopped in 2026. Without these nutrients, the fish move away or die. This has caused a total collapse of the local fishing industry, affecting global supplies of fishmeal and seafood.
- **Central American "Dry Corridor":** In 2026, countries like Guatemala and Honduras are facing a prolonged "Canícula" (dry spell). This has led to total crop failures in corn and beans, triggering a humanitarian crisis and increasing the migration of "climate refugees" toward North America.
- **African "Climate Contrast":** The 2026 event is splitting Africa into two. While East Africa (Kenya/Somalia) is seeing unseasonal, heavy floods, Southern Africa (Zimbabwe/South Africa) is suffering from a "drought-induced" power crisis as the giant Kariba Dam hits record-low water levels.
- **The "Heat Dome" over North India:** In early 2026, the Super El Niño has contributed to a "Heat Dome" effect over the Indo-Gangetic plains. High-pressure systems trap hot air near the ground, causing temperatures to stay above **45°C** for weeks, which exhausts the soil and depletes groundwater levels.

Mitigation Strategies and Policy Frameworks

Governments and international bodies are not just watching the 2026 Super El Niño; they are actively fighting its impacts through technology, law, and financial planning. This section details the "defensive wall" built to protect people and the economy from the climate shock.

- **Early Warning Systems (EWS):** Under the **WMO's "Early Warnings for All"** initiative, 2026 saw the deployment of advanced ocean buoys and AI-driven weather models. These gave governments a 6-month "head start" to store food and move people out of flood-prone zones before the Super El Niño peaked.
- **India's "Climate-Resilient" Agriculture:** The Indian government has promoted "**Drought-Tolerant**" seed varieties developed by **ICAR (Indian Council of Agricultural Research)**. In 2026, farmers are being encouraged to shift from water-heavy crops like Paddy to "Climate-Smart" crops like Millets (Bajra, Jowar) which need very little water.
- **National Heat Action Plans (HAPs):** In 2026, over **23 Indian states** have activated formal Heat Action Plans. These are statutory frameworks that mandate "Cool Roof" programs, provide "Heat Shelters" for laborers, and change school/office timings to avoid the peak afternoon sun.
- **Strategic Water Management:** To combat the 2026 drought, the Indian government utilized the **Atal Bhujal Yojana** to focus on groundwater recharge. Reservoirs are being managed using "Rule Curves"—a scientific way to decide exactly how much water to release for drinking versus farming to ensure the supply lasts through the year.
- **Financial "Climate Buffers":** The **World Bank** and **IMF** have introduced "Climate Resilient Debt Clauses." This allows vulnerable countries to pause their debt payments in 2026 if they are hit by a Super El Niño disaster, allowing them to spend that money on emergency food and medicine instead.





- **The PM-KUSUM Scheme:** In 2026, India accelerated the installation of solar-powered water pumps. This ensures that even if the power grid fails due to high heat, farmers can still access groundwater to save their crops without relying on expensive diesel or a struggling electricity grid.
- **Global Food Reserve Policies:** The **UN Food and Agriculture Organization (FAO)** has triggered "Anticipatory Action" protocols in 2026. They are providing cash transfers and animal feed to farmers in the "Dry Corridor" *before* the drought destroys their livelihoods, which is 7x cheaper than providing aid after the disaster.
- **Legal Protections for Workers:** In response to the 2026 heatwaves, several countries have introduced "Maximum Temperature Laws." In India, many states are using the **Disaster Management Act (2005)** to legally prohibit outdoor construction work between 12 PM and 4 PM during "Red Alert" heatwave days.

Conclusion

- The **2026 Super El Niño** is more than just a meteorological event; it is a profound reminder of the Earth's interconnectedness. While the phenomenon is natural, its intensity is being "supercharged" by decades of global warming, pushing our planet toward record-breaking temperatures and disrupting the lives of billions. For a country like India, the stakes are exceptionally high, as the event directly challenges food security, energy stability, and public health.
- However, 2026 also marks a turning point in human preparation. Through the use of statutory acts like the **Disaster Management Act**, constitutional protections under **Article 21**, and advanced scientific modeling, we are no longer helpless. By combining "traditional wisdom" in water conservation with "modern technology" in weather forecasting, we can mitigate the worst impacts. The lesson of the 2026 Super El Niño is clear: while we cannot stop the ocean from warming, we can certainly choose how we prepare, adapt, and protect the most vulnerable members of our society from the heat.





CONTINUE THE ANALYSIS

MORE DEEP DIVES AVAILABLE AT

Deep Dives



Simplicity Towards Knowledge.